

**Legend**

North Central San Diego County Study Area

**City/Unincorporated Boundaries**

- Carlsbad
- Del Mar
- Encinitas
- Escondido
- San Diego
- Solana Beach
- San Marcos
- Unincorporated San Diego County

Del Dios **Community Name**  
 City of San Diego **City Name**

**Base Map Features**

- 15 Freeways
- Major Streets/Proposed
- Streets
- Railroads
- Streams/Rivers
- Lakes/Reservoirs/Lagoons

**Regional Map**

MSR/SOI Study Area

San Diego County

North

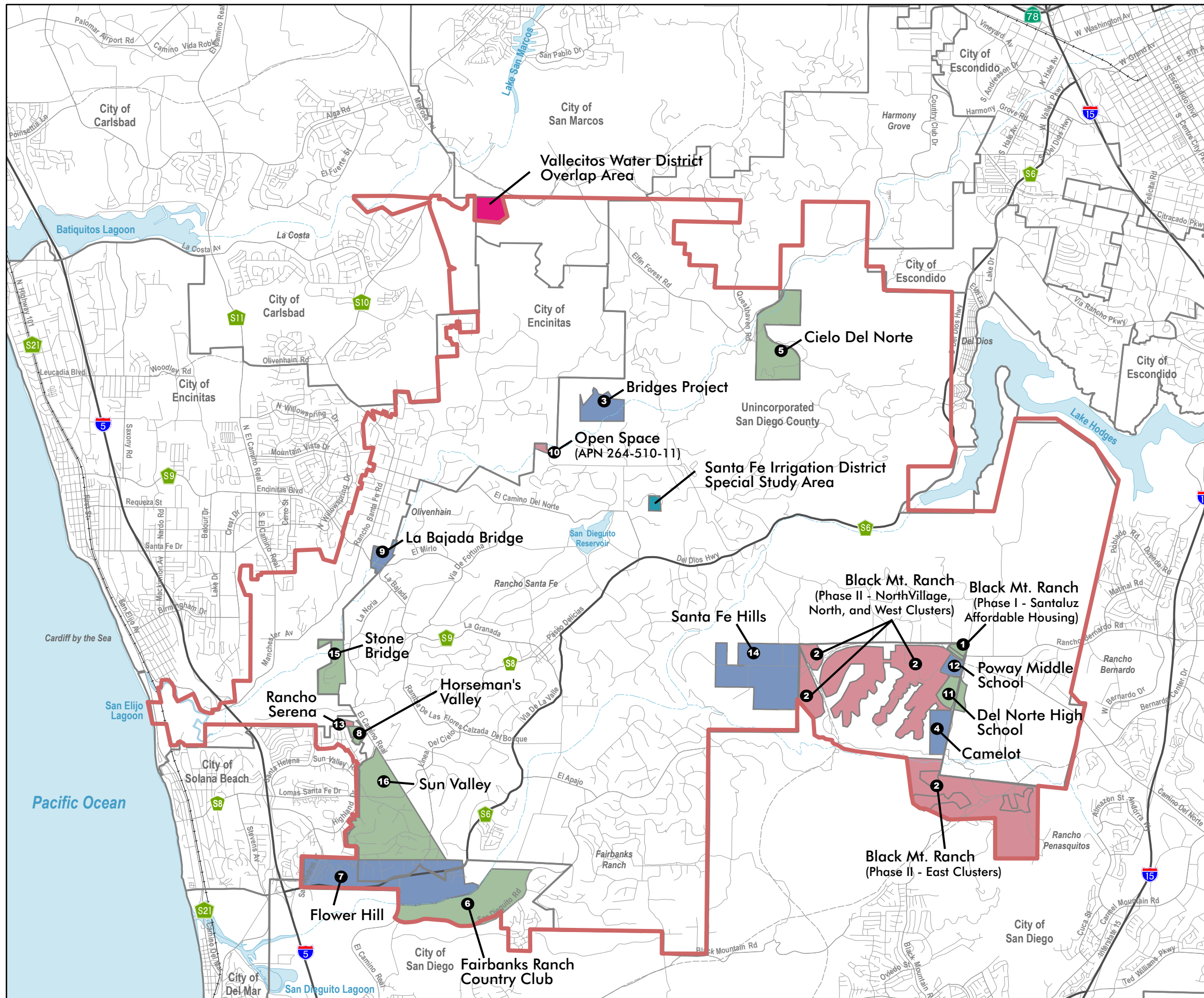
Map Prepared by: Cotton/Bridges/Associates, 2004  
 Map Sources: SANGIS, 2003; SANDAG, 1992-1997

Miles

0 0.5 1 2 3 4

Figure 1  
**Project Area and Local Jurisdictions**





**Legend**

North Central San Diego County Study Area

Areas of Service Consideration  
(Color denotes property boundaries only)

**Areas of Service Consideration**

- 1 Black Mountain Ranch (Phase I)
- 2 Black Mountain Ranch (Phase II)
- 3 Bridges Project (TM No. 5239 RPL2-Unit 7)
- 4 Camelot
- 5 Cielo Del Norte
- 6 Fairbanks Ranch Country Club
- 7 Flower Hill
- 8 Horseman's Valley
- 9 La Bajada Bridge
- 10 Open Space (APN 264-510-11)
- 11 Del Norte High School
- 12 Poway Middle School
- 13 Rancho Serena
- 14 Santa Fe Hills
- 15 Stone Bridge
- 16 Sun Valley

Vallecitos Water District Overlap Area  
 Santa Fe Irrigation Special Study Area

**Base Map Features**

- City/Unincorporated Boundaries
- Freeways
- Major Roads
- Streets
- Railroads
- Lakes/Reservoirs/Lagoons
- Rivers/Streams

North Map Prepared by: Cotton/Bridges/Associates (CBA), 2004  
Map Sources: SANGIS, 2003; SANDAG, 1992-1997; Olivenhain, 2003; and Rancho Santa Fe, 2003.

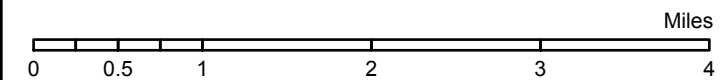
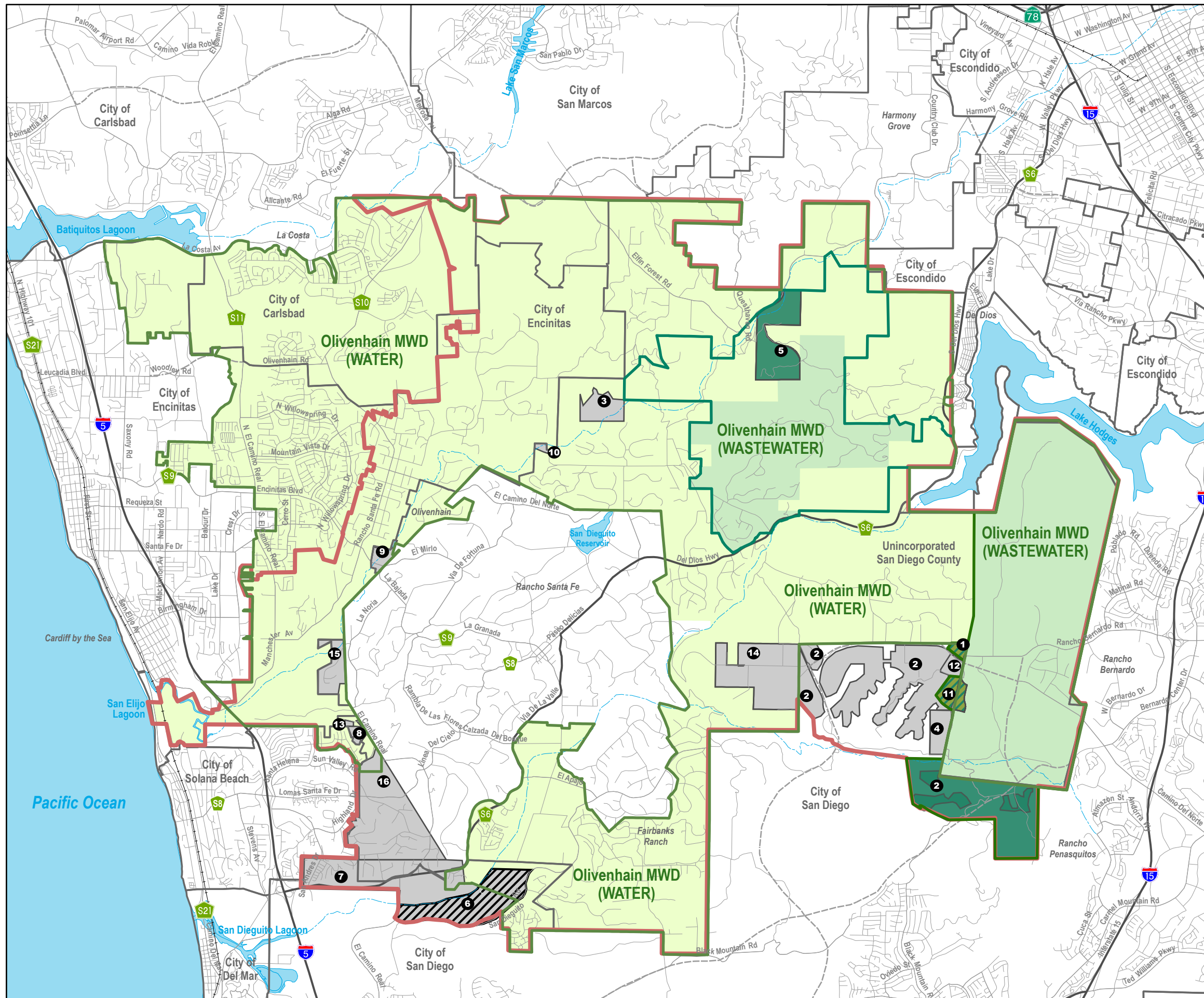


Figure 2  
**Areas of Service Consideration**





**Legend**

North Central San Diego County Study Area

**Olivenhain**

- Proposed Olivenhain MWD - Water Sphere
- Olivenhain MWD - Water
- Proposed Olivenhain MWD - Wastewater Sphere
- Olivenhain MWD - Wastewater

**Areas of Service Consideration  
Proposed Service Provider**

- Olivenhain MWD - Water
- Olivenhain MWD - Wastewater
- Olivenhain MWD - Water and Wastewater
- Other Service Providers or Not Applicable
- Potential Special Study Area

See Figure 2 For Label Name

Note: Areas of service consideration may also be proposed for service per Figure 5.

**Base Map Features**

- City/Unincorporated Boundaries
- Freeways
- Major Roads
- Streets
- Railroads
- Lakes/Reservoirs/Lagoons
- Rivers/Streams

North



Map Prepared by: Cotton/Bridges/Associates, 2004  
Map Sources: SANGIS, 2003; SANDAG, 1992-1997; Olivenhain, 2003; and Rancho Santa Fe, 2003.

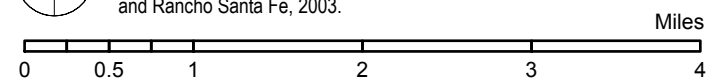
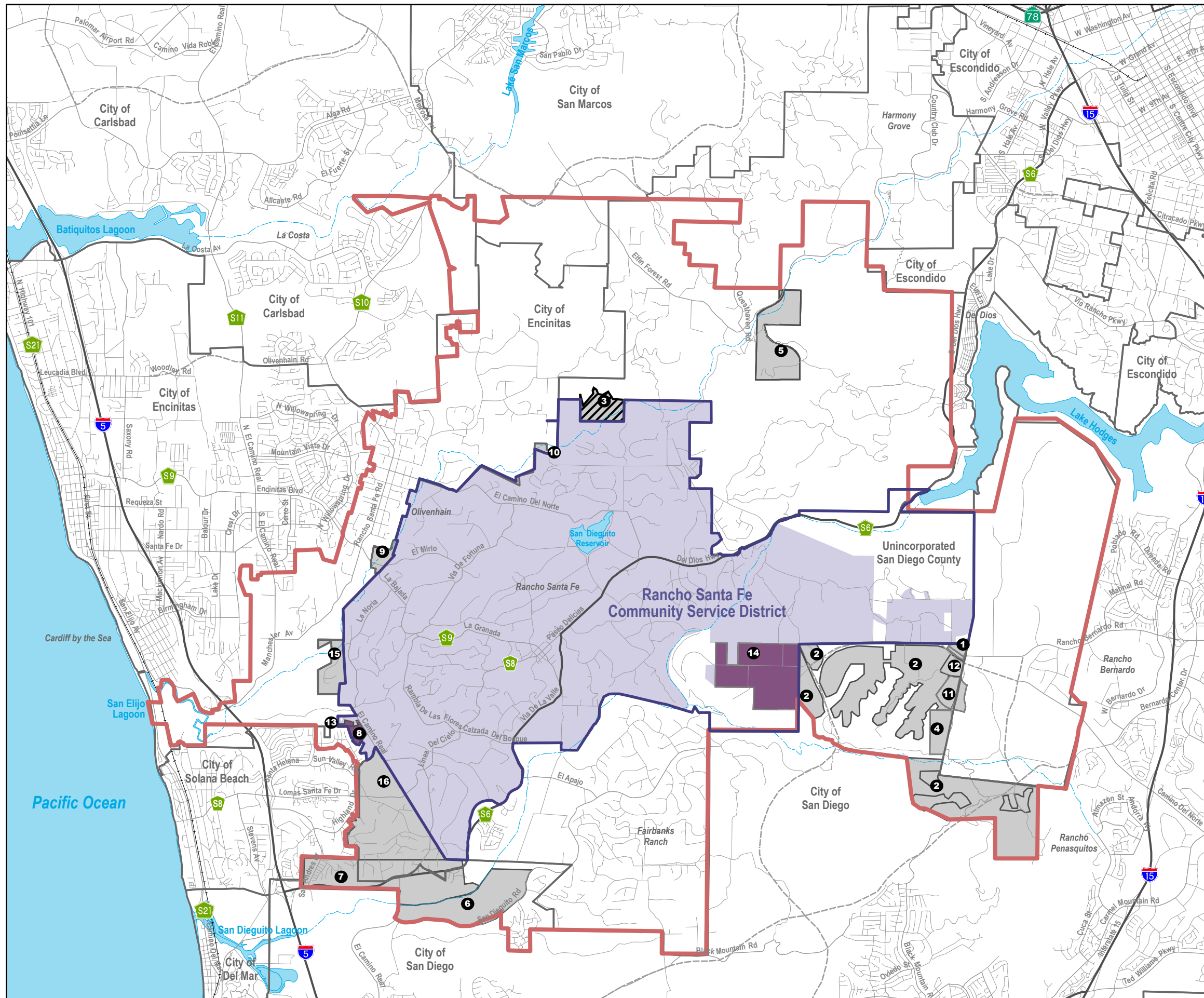


Figure 3  
**Proposed SOI Expansion For  
The Olivenhain Municipal  
Water District**





**Legend**

North Central San Diego County Study Area

**Rancho Santa Fe Community Service District**

Proposed Rancho Santa Fe Community Service District Sphere

Rancho Santa Fe Community Service District

**Areas of Service Consideration  
Proposed Service Provider**

Rancho Santa Fe Community Service District

Other Service Provider or Not Applicable

Potential Special Study Area

See Figure 2 For Label Name

Note: Areas of service consideration may also be proposed for service per Figure 5.

**Base Map Features**

City/Unincorporated Boundaries

Freeways

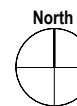
Major Roads

Streets

Railroads

Lakes/Reservoirs/Lagoons

Rivers/Streams



Map Prepared by: Cotton/Bridges/Associates, 2004  
Map Sources: SANGIS, 2003; SANDAG, 1992-1997; Olivenhain, 2003; and Rancho Santa Fe, 2003.

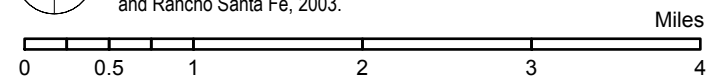


Figure 4  
**Proposed SOI Expansion For  
The Rancho Santa Fe  
Community Service District**