

**Legend**

North Central San Diego County Study Area

**City/Unincorporated Boundaries**

- Carlsbad
- Del Mar
- Encinitas
- Escondido
- San Diego
- Solana Beach
- San Marcos
- Unincorporated San Diego County

Del Dios **Community Name**  
 City of San Diego **City Name**

**Base Map Features**

- Freeways
- Major Streets/Proposed
- Streets
- Railroads
- Streams/Rivers
- Lakes/Reservoirs/Lagoons



North

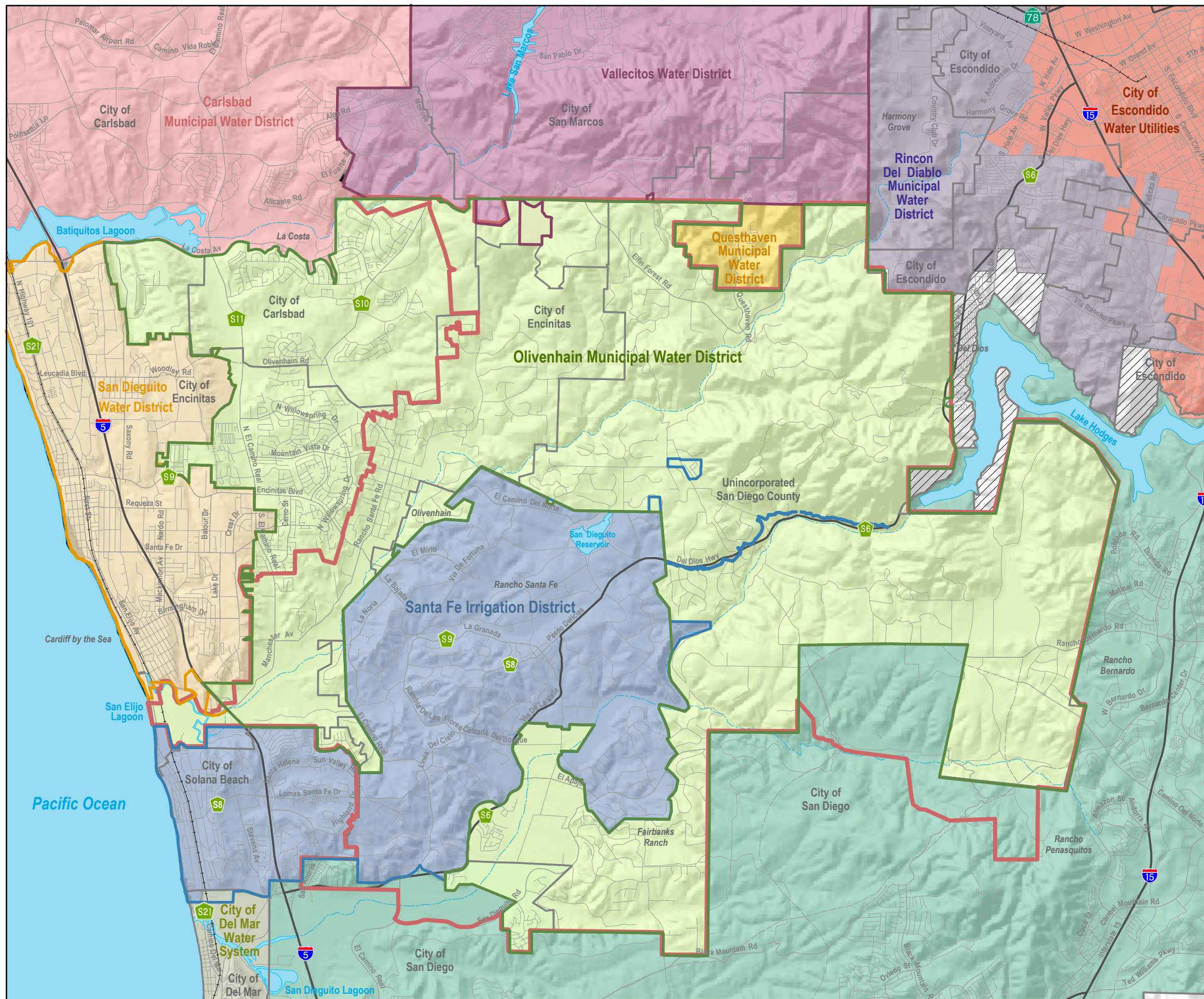
Map Prepared by: Cotton/Bridges/Associates, 2004  
 Map Sources: SANGIS, 2003; SANDAG, 1992-1997

Miles

0 0.5 1 2 3 4

Figure ES - 1  
**Jurisdictional Boundaries**  
 San Diego Local Agency Formation Commission  
 North Central San Diego County Municipal Service Review and  
 Sphere of Influence Update





**Legend**

North Central San Diego County Study Area

**City/Unincorporated Boundaries**

- Olivenhain Municipal Water District Sphere
- Olivenhain Municipal Water District
- Santa Fe Irrigation District Sphere\*
- Santa Fe Irrigation District
- San Dieguito Water District Sphere
- San Dieguito Water District
- Vallecitos Water District Sphere
- Vallecitos Water District
- Questhaven Municipal Water District
- City of Escondido Water Utilities
- Rincon Del Diablo Municipal Water District
- City of Del Mar Water Systems
- City of Carlsbad Municipal Water District
- City of San Diego Water Department
- Unknown

**Base Map Features**

- City/Unincorporated Boundaries
- Freeways
- Major Roads
- Streets
- Railroads
- Lakes/Reservoirs/Lagoons
- Rivers/Streams

North

Map Prepared by: Cotton/Bridges/Associates (CBA), 2004  
 Map Sources: SANGIS, 2003; SANDAG, 1992-1997; Olivenhain, 2003; and Rancho Santa Fe, 2003.  
 \* Note: Modifications have been made to this boundary by CBA and may not be accurate.

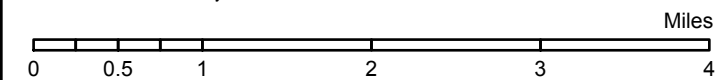
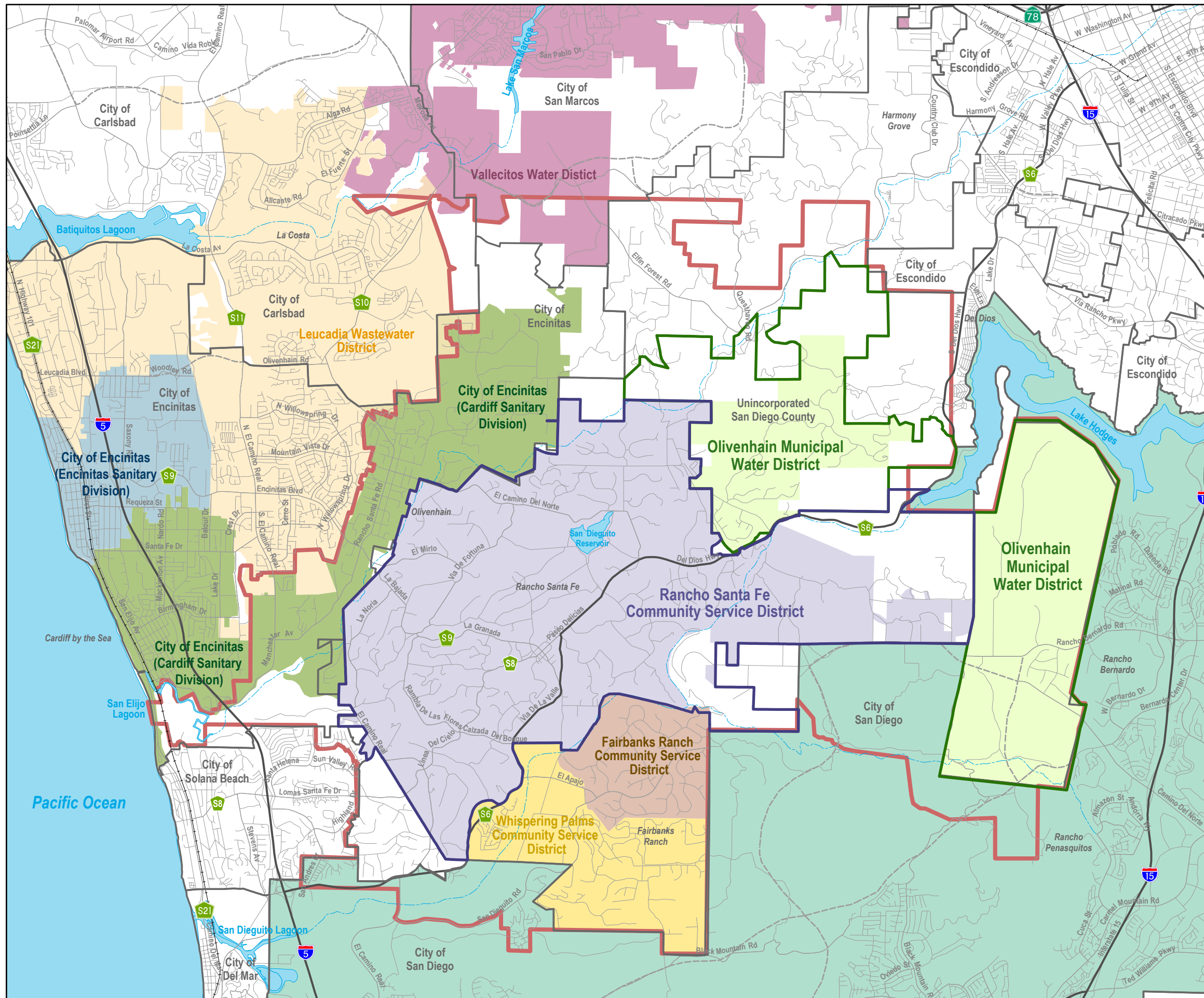


Figure ES-2  
**Water Districts**

San Diego Local Agency Formation Commission  
 North Central San Diego County Municipal Service Review and  
 Sphere of Influence Update





**Legend**

North Central San Diego County Study Area

**Wastewater Agencies**

- Olivenhain Municipal Water District Sphere
- Olivenhain Municipal Water District
- Rancho Santa Fe Community Service District Sphere
- Rancho Santa Fe Community Service District
- Vallecitos Water Distict
- Leucadia Wastewater District
- City of Encinitas (Encinitas Sanitary Division)
- City of Encinitas (Cardiff Sanitary Division)
- Whispering Palms Community Service District
- Fairbanks Ranch Community Service District
- City of San Diego (Metropolitan Wastewater Department)

**Base Map Features**

- City/Unincorporated Boundaries
- Freeways
- Major Roads
- Streets
- Railroads
- Lakes/Reservoirs/Lagoons
- Rivers/Streams

North

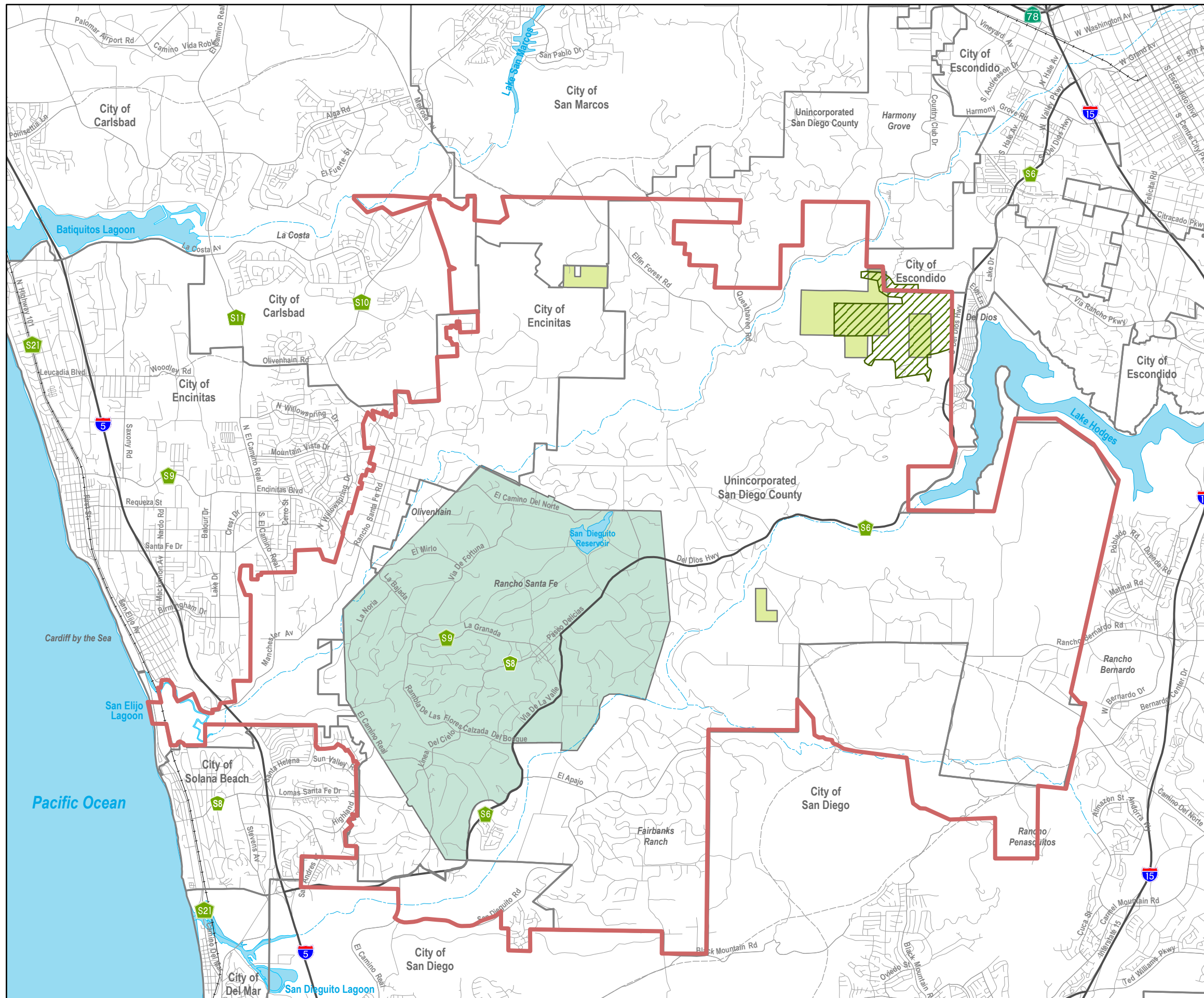
Map Prepared by: Cotton/Bridges/Associates, 2004  
 Map Sources: SANGIS, 2003; SANDAG, 1992-1997; Olivenhain, 2003; Rancho Santa Fe, 2003; and City of Encinitas, 2004.

Miles

0 0.5 1 2 3 4

Figure ES-3  
**Sewer Districts**  
 San Diego Local Agency Formation Commission  
 North Central San Diego County Municipal Service Review and Sphere of Influence Update





**Legend**

North Central San Diego County Study Area

**Parks and Recreation Service Area and Roadside Landscape**

Olivenhain MWD Park and Recreation\*

Elfin Forest

Rancho Santa Fe Community Service District Roadside Landscape Maintenance Improvement District #1

\* Note: Latent Powers Authority provides for park and recreation services to anywhere in the OMWD Service Area.

**Base Map Features**

City/Unincorporated Boundaries

Freeways

Major Roads

Streets

Railroads

Lakes/Reservoirs/Lagoons

Rivers/Streams

North Map Prepared by: Cotton/Bridges/Associates (CBA), 2004  
Map Sources: SANGIS, 2003; SANDAG, 1992-1997; Olivenhain, 2003; and Rancho Santa Fe, 2003.

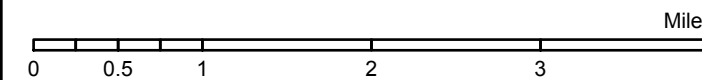
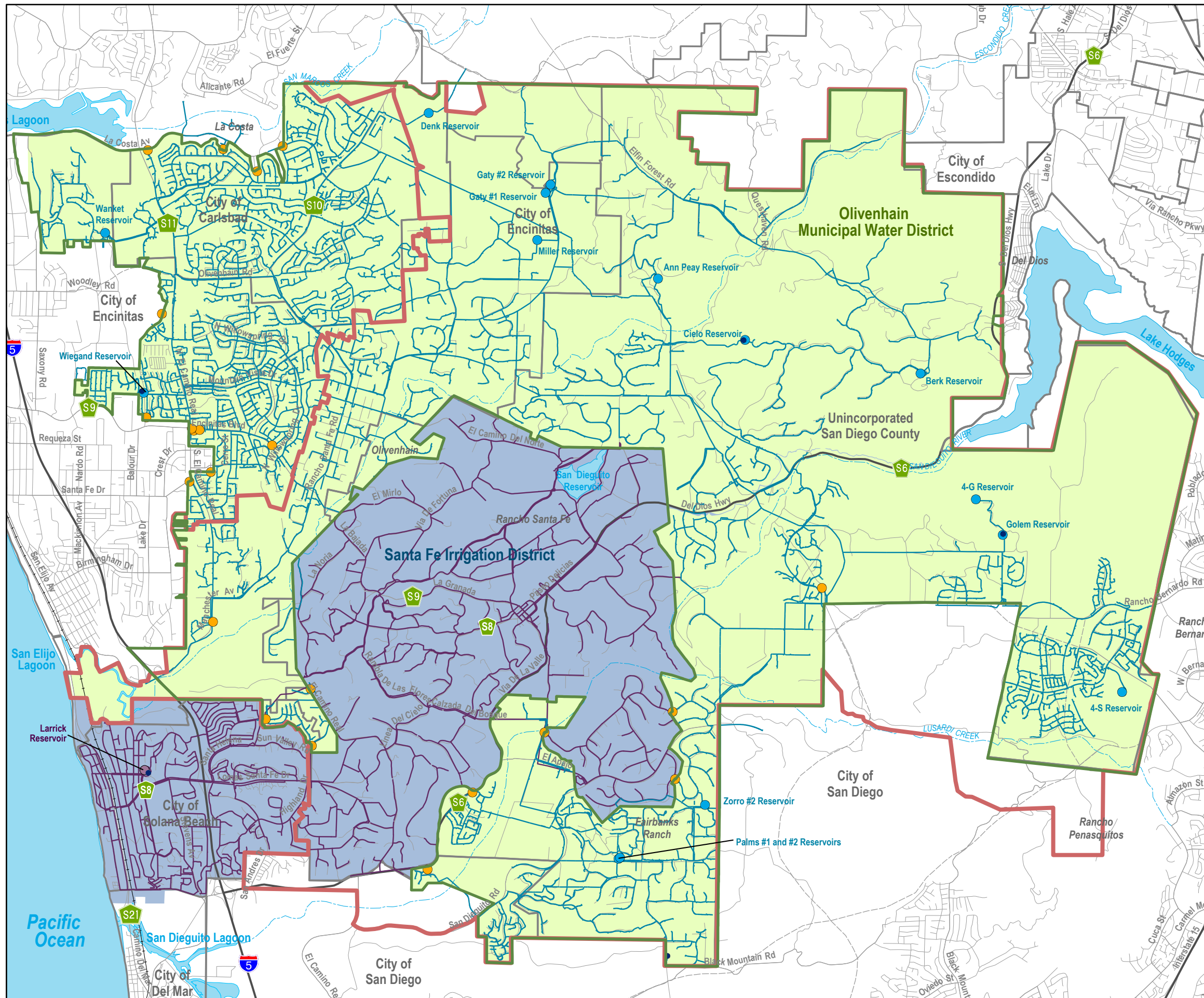


Figure ES-4

**Parks and Open Space**

San Diego Local Agency Formation Commission  
North Central San Diego County Municipal Service Review and Sphere of Influence Update





**Legend**

North Central San Diego County Study Area

**Olivenhain Municipal Water District Infrastructure**

- Olivenhain Municipal Water District Sphere
- Olivenhain Municipal Water District
- Water Reservoir
- Reservoir Water Reservoir Name
- Water Pump Station
- Emergency Connection
- Water Pipeline

**Santa Fe Irrigation District Infrastructure**

- Santa Fe Irrigation District Sphere
- Santa Fe Irrigation District
- Water Reservoir
- Reservoir Water Reservoir Name
- Water Pump Station
- Water Pipeline

**Base Map Features**

- Freeways
- Major Roads
- Streets
- Railroads
- Lakes/Reservoirs/Lagoons
- Rivers/Streams

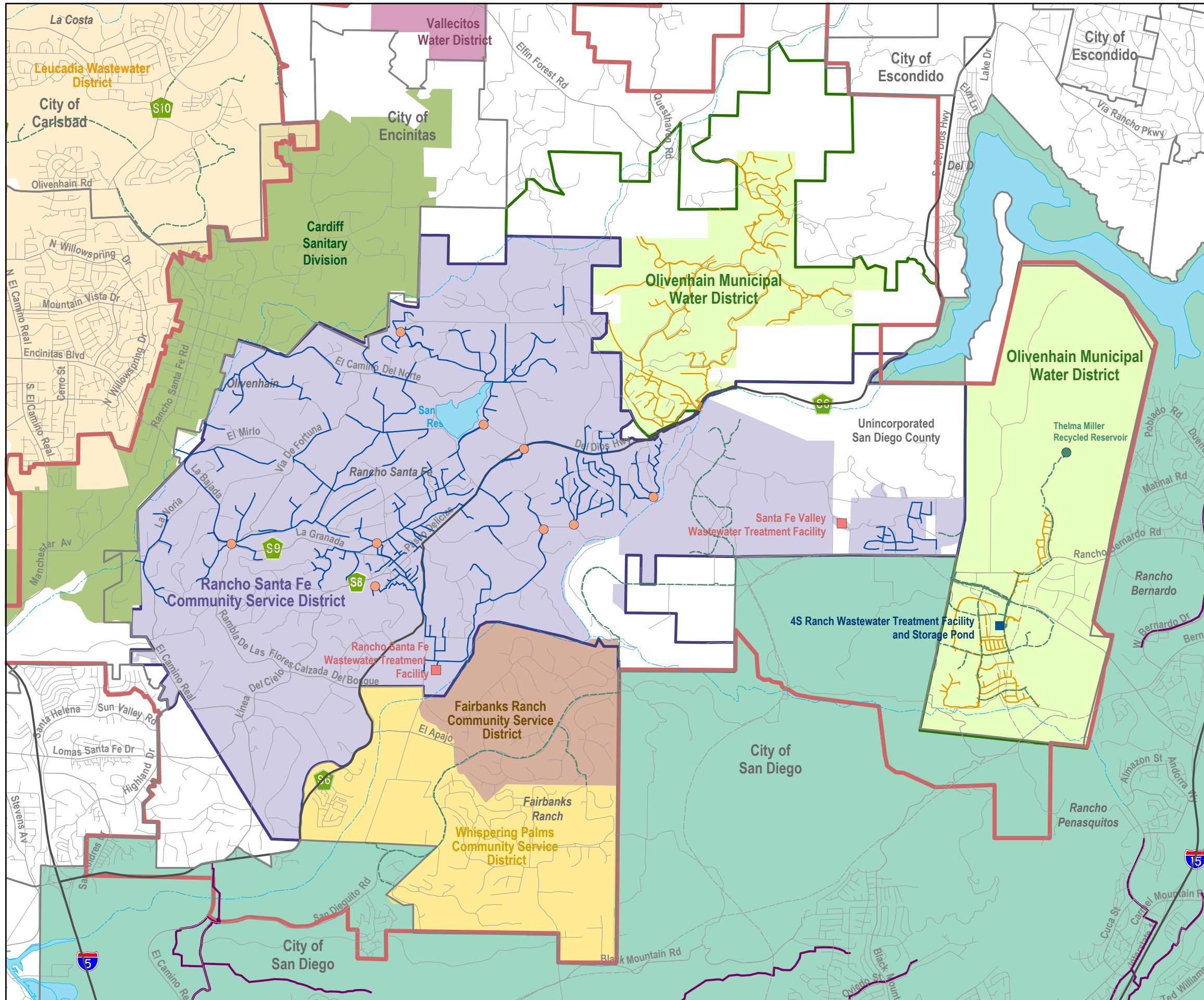
North

Map Prepared by: Cotton/Bridges/Associates, 2004  
 Map Sources: SANGIS, 2003; SANDAG, 1992-1997; Olivenhain, 2003; and Santa Fe Irrigation District, 2003.

Miles  
 0 0.5 1 2 3 4

Figure MSR-1  
**Water Infrastructure**





- Legend**
- North Central San Diego County Study Area
  - Olivenhain Municipal Water District Wastewater Infrastructure**
    - Olivenhain Sanitation District Sphere
    - Olivenhain Sanitation District
    - Olivenhain Sewer Trunk Pipelines
  - Reclaimed Water**
    - Reclaimed Water Reservoir
    - Reclaimed Water Pipeline
    - Reclaimed Water Reservoir Name
    - Olivenhain Wastewater Treatment Facilities
  - Rancho Santa Fe Community Service District**
    - Rancho Santa Fe Community Service District Sphere
    - Rancho Santa Fe Community Service District
    - Sewer Pump Station
    - Rancho Santa Fe Wastewater Treatment Facilities
    - Sewer Pipelines
  - Other Community Service Districts (Wastewater)**
    - Whispering Palms Community Service District
    - Fairbanks Ranch Community Service District
    - Vallecitos Water District (Wastewater)
    - Leucadia Wastewater District
    - Cardiff Sanitary Division
    - City of San Diego (Metropolitan Wastewater Department)
    - City of San Diego Sewer Trunk Pipelines

North

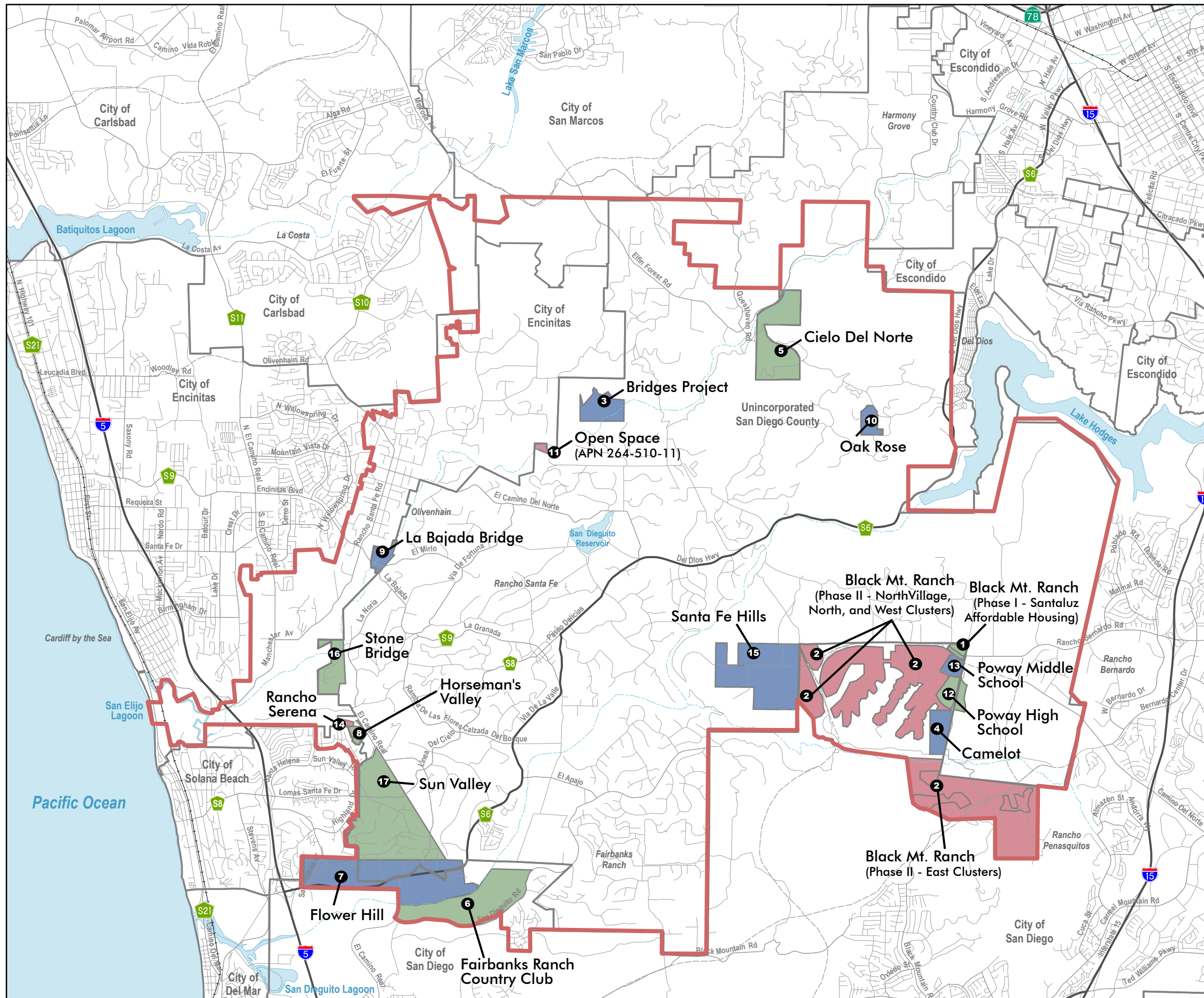
Map Prepared by: Cotton/Bridges/Associates, 2004  
 Map Sources: SANGIS, 2003; SANDAG, 1992-1997; Olivenhain, 2003;  
 Rancho Santa Fe, 2003; City of Encinitas, 2004 and City of San Diego, 2004.

Miles

0   0.5   1   2   3   4

Figure MSR-2  
**Sewer Infrastructure**  
 San Diego Local Agency Formation Commission  
 North Central San Diego County Municipal Service Review and  
 Sphere of Influence Update





**Legend**

North Central San Diego County Study Area

**Areas of Service Consideration**

Areas of Service Consideration  
(Color denotes property boundaries only)

- 1 Black Mountain Ranch (Phase I)
- 2 Black Mountain Ranch (Phase II)
- 3 Bridges Project
- 4 Camelot
- 5 Cielo Del Norte
- 6 Fairbanks Ranch Country Club
- 7 Flower Hill
- 8 Horseman's Valley
- 9 La Bajada Bridge
- 10 Oak Rose
- 11 Open Space (APN 264-510-11)
- 12 Poway High School
- 13 Poway Middle School
- 14 Rancho Serena
- 15 Santa Fe Hills
- 16 Stone Bridge
- 17 Sun Valley

**Base Map Features**

- City/Unincorporated Boundaries
- Freeways
- Major Roads
- Streets
- Railroads
- Lakes/Reservoirs/Lagoons
- Rivers/Streams

North Map Prepared by: Cotton/Bridges/Associates (CBA), 2004  
Map Sources: SANGIS, 2003; SANDAG, 1992-1997; Olivenhain, 2003; and Rancho Santa Fe, 2003.

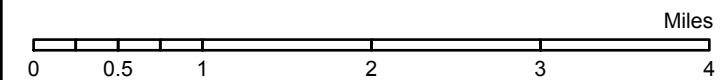
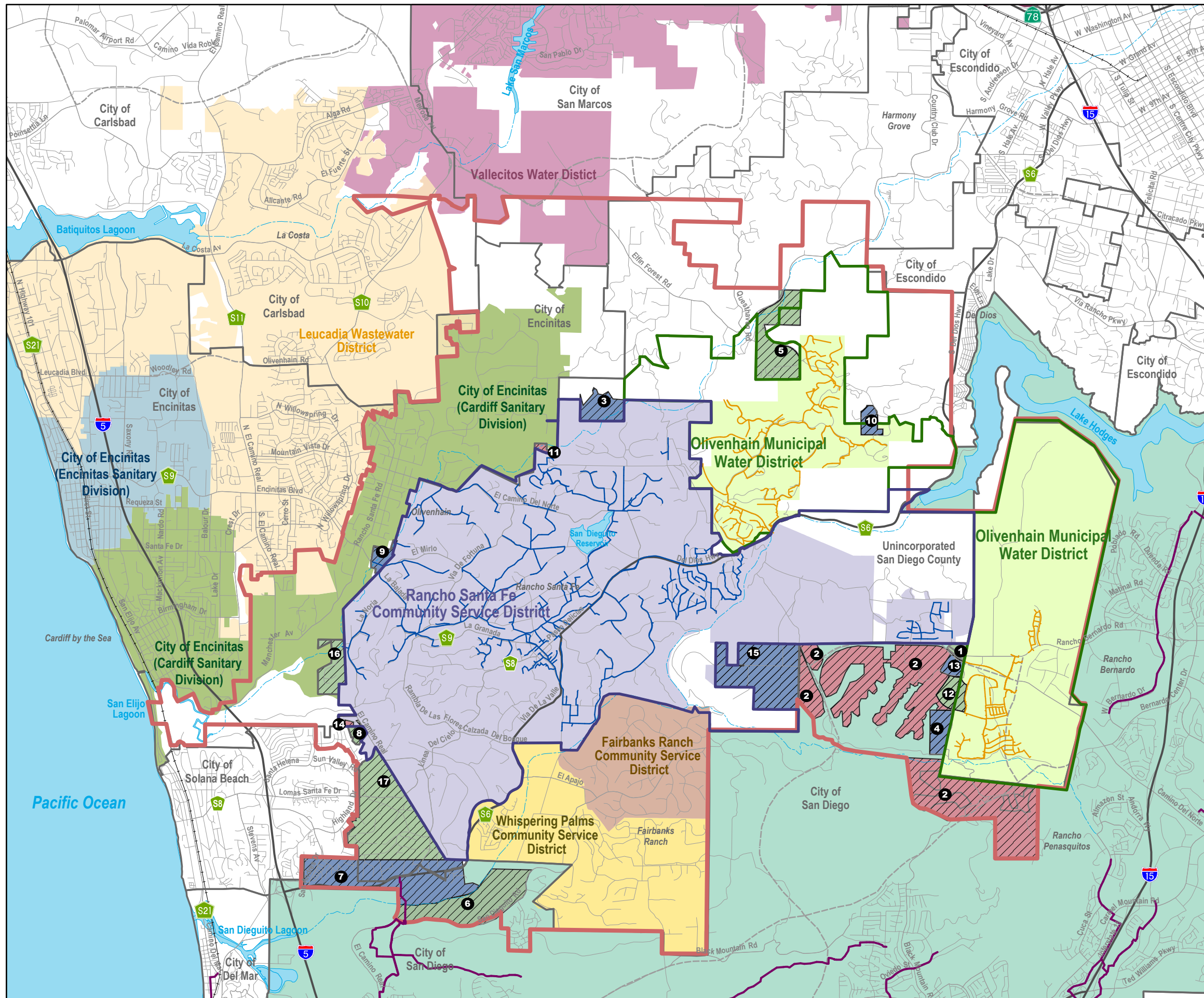


Figure SOI-1  
**Areas of Service Consideration**

San Diego Local Agency Formation Commission  
North Central San Diego County Municipal Service Review and  
Sphere of Influence Update





**Legend**

North Central San Diego County Study Area

**Wastewater Agencies**

- Olivenhain Municipal Water District Sphere
- Olivenhain Municipal Water District
- Rancho Santa Fe Community Service District Sphere
- Rancho Santa Fe Community Service District
- Vallecitos Water District (Wastewater)
- Leucadia Wastewater District
- City of Encinitas (Encinitas Sanitary Division)
- City of Encinitas (Cardiff Sanitary Division)
- Whispering Palms Community Service District
- Fairbanks Ranch Community Service District
- City of San Diego (Metropolitan Wastewater Department)

**Areas of Service Consideration**

- Areas of Service Consideration (Color denotes property boundaries only)
- 2 See Figure SOI-1 For Label Name

**Base Map Features**

- City/Unincorporated Boundaries
- Freeways
- Major Roads
- Streets
- Railroads
- Lakes/Reservoirs/Lagoons
- Rivers/Streams

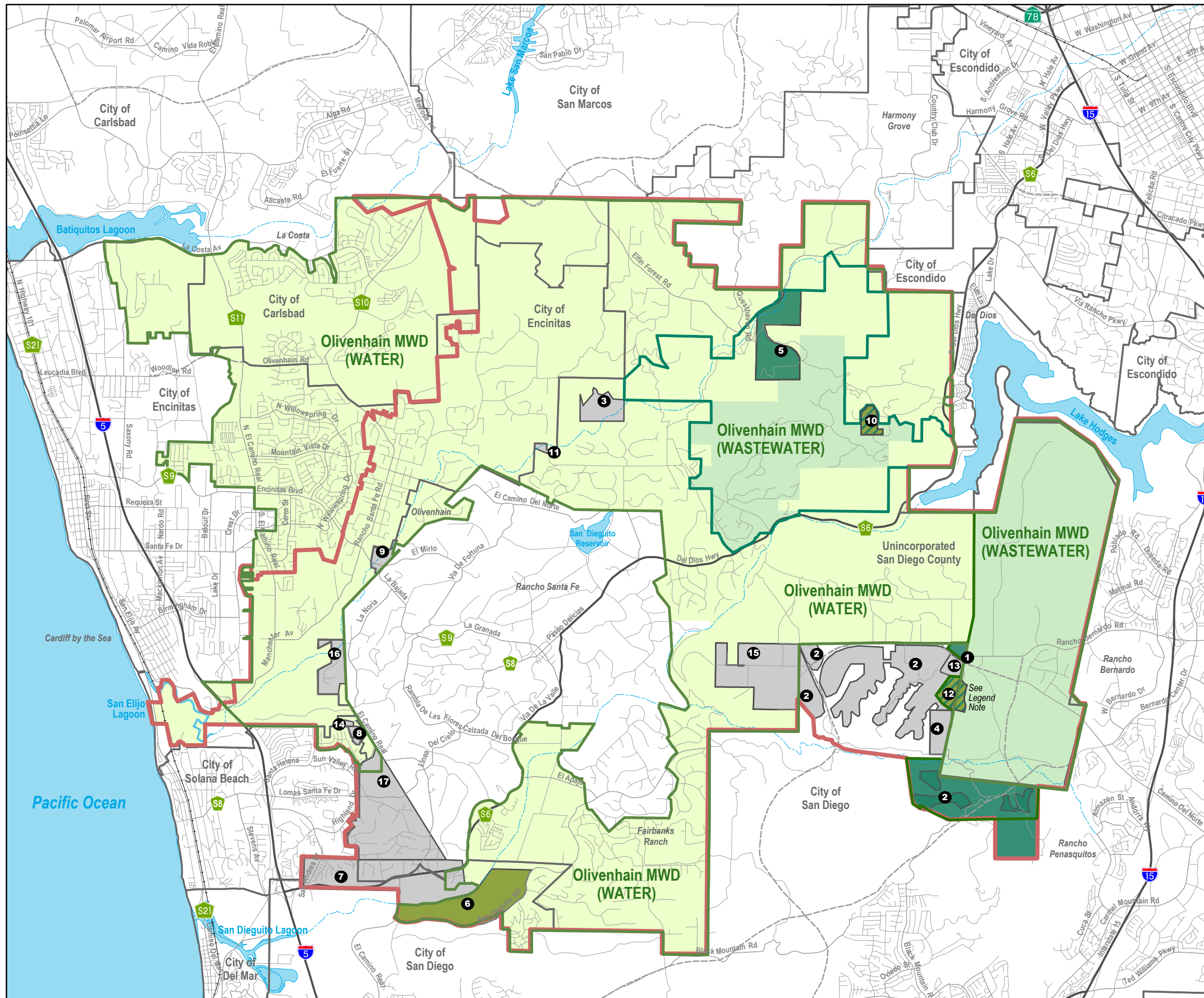
North

Map Prepared by: Cotton/Bridges/Associates, 2004  
 Map Sources: SANGIS, 2003; SANDAG, 1992-1997; Olivenhain, 2003; and Rancho Santa Fe, 2003.

Miles  
 0 0.5 1 2 3 4

Figure SOI-2  
**Sewer Districts and  
 Areas of Service Consideration**  
 San Diego Local Agency Formation Commission  
 North Central San Diego County Municipal Service Review and  
 Sphere of Influence Update





**Legend**

North Central San Diego County Study Area

**Olivenhain**

- Olivenhain MWD - Water Sphere
- Olivenhain MWD - Water
- Olivenhain MWD - Wastewater Sphere
- Olivenhain MWD - Wastewater

**Consideration Areas Proposed Service Provider**

- Olivenhain MWD - Water
- Olivenhain MWD - Wastewater
- Olivenhain MWD - Water and Wastewater
- Other Service Providers

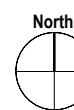
See Figure SOI-1 For Label Name

**Note:**

Provision of service to Poway High School (Area of Service Consideration #12) is contingent upon additional analysis and contractual arrangement between OMWD/City of San Diego.

**Base Map Features**

- City/Unincorporated Boundaries
- Freeways
- Major Roads
- Streets
- Railroads
- Lakes/Reservoirs/Lagoons
- Rivers/Streams



Map Prepared by: Cotton/Bridges/Associates, 2004  
 Map Sources: SANGIS, 2003; SANDAG, 1992-1997; Olivenhain, 2003; and Rancho Santa Fe, 2003.

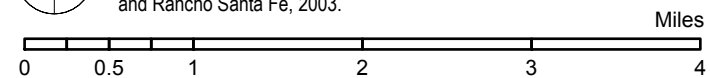
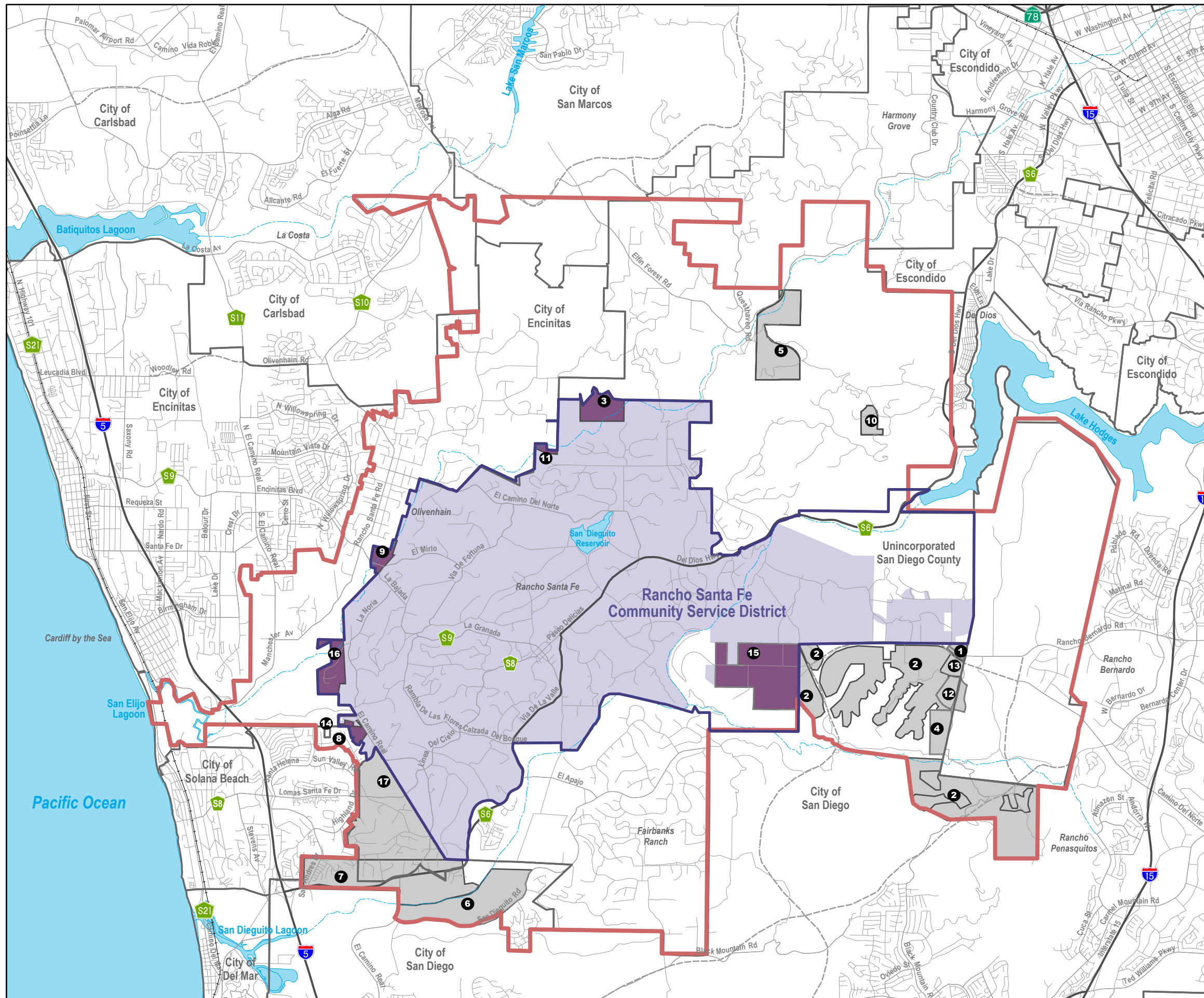


Figure SOI-3  
**Olivenhain MWD and Areas of Service Consideration**

San Diego Local Agency Formation Commission  
 North Central San Diego County Municipal Service Review and Sphere of Influence Update





**Legend**

North Central San Diego County Study Area

**Rancho Santa Fe Community Service District**

Rancho Santa Fe Community Service District Sphere  
 Rancho Santa Fe Community Service District

**Consideration Areas Proposed Service Provider**

Rancho Santa Fe Community Service District  
 Other Service Providers  
 See Figure SOI-1 For Label Name

**Base Map Features**

City/Unincorporated Boundaries  
 Freeways  
 Major Roads  
 Streets  
 Railroads  
 Lakes/Reservoirs/Lagoons  
 Rivers/Streams



Map Prepared by: Cotton/Bridges/Associates, 2004  
 Map Sources: SANGIS, 2003; SANDAG, 1992-1997; Olivenhain, 2003; and Rancho Santa Fe, 2003.

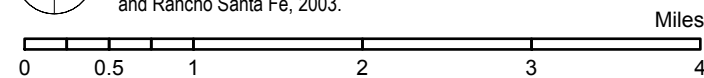
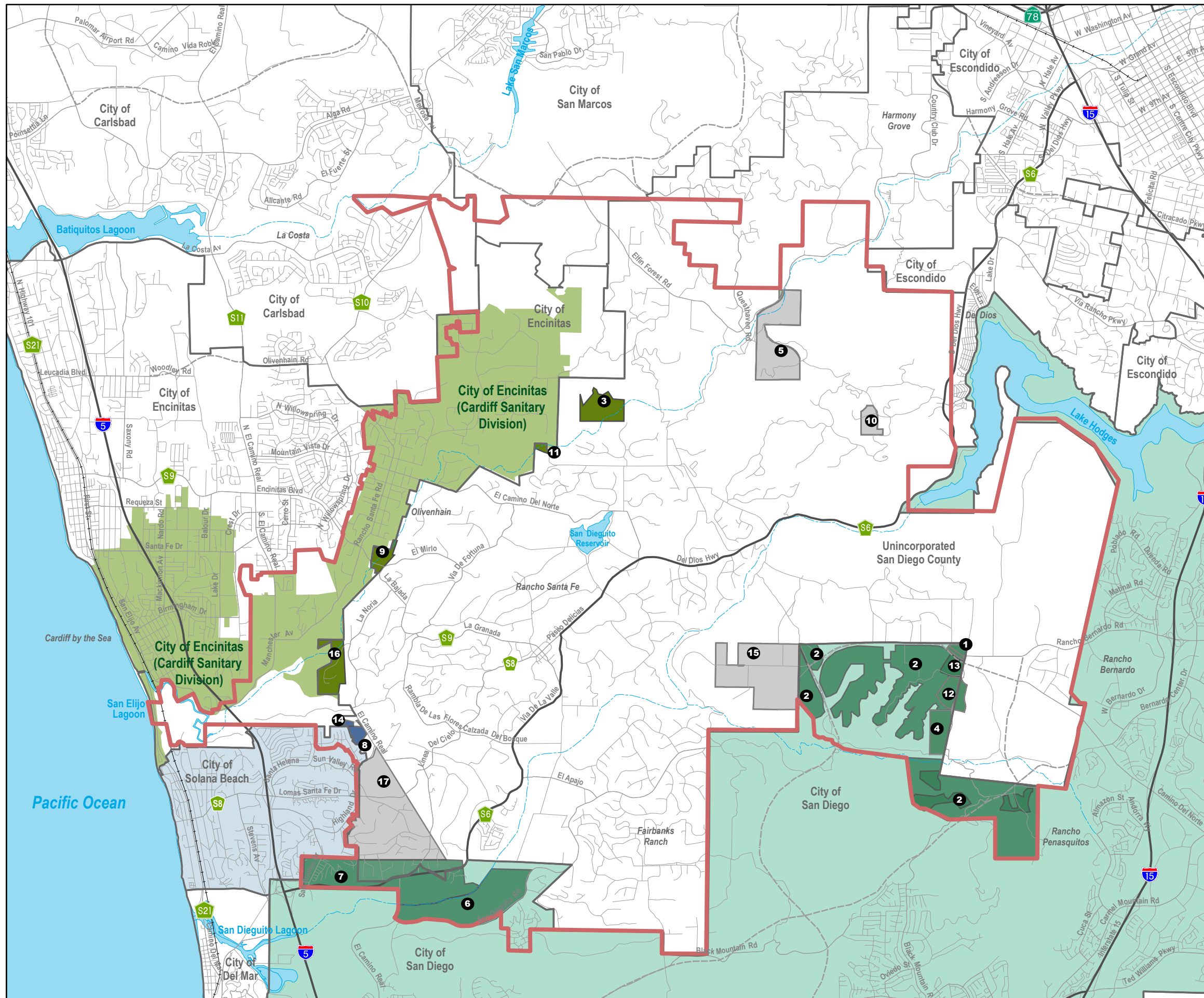


Figure SOI-4  
**Rancho Santa Fe CSD and Areas of Service Consideration**

San Diego Local Agency Formation Commission  
 North Central San Diego County Municipal Service Review and Sphere of Influence Update





**Legend**

North Central San Diego County Study Area

**Jurisdictions**

- City of Encinitas (Cardiff Sanitary Division)
- City of Solana Beach
- City of San Diego (Metropolitan Wastewater Department)

**Consideration Areas Proposed Service Provider**

- City of Encinitas (Cardiff Sanitary Division)
- City of Solana Beach
- City of San Diego
- Other Service Providers
- 2 See Figure SOI-1 For Label Name

**Base Map Features**

- City/Unincorporated Boundaries
- 15 Freeways
- Major Roads
- Streets
- + Railroads
- Lakes/Reservoirs/Lagoons
- Rivers/Streams

North

Map Prepared by: Cotton/Bridges/Associates, 2004  
 Map Sources: SANGIS, 2003; SANDAG, 1992-1997; Olivenhain, 2003; and Rancho Santa Fe, 2003.

Miles

0 0.5 1 2 3 4

Figure SOI-5  
**Jurisdictions and  
 Areas of Service Consideration**  
 San Diego Local Agency Formation Commission  
 North Central San Diego County Municipal Service Review and  
 Sphere of Influence Update