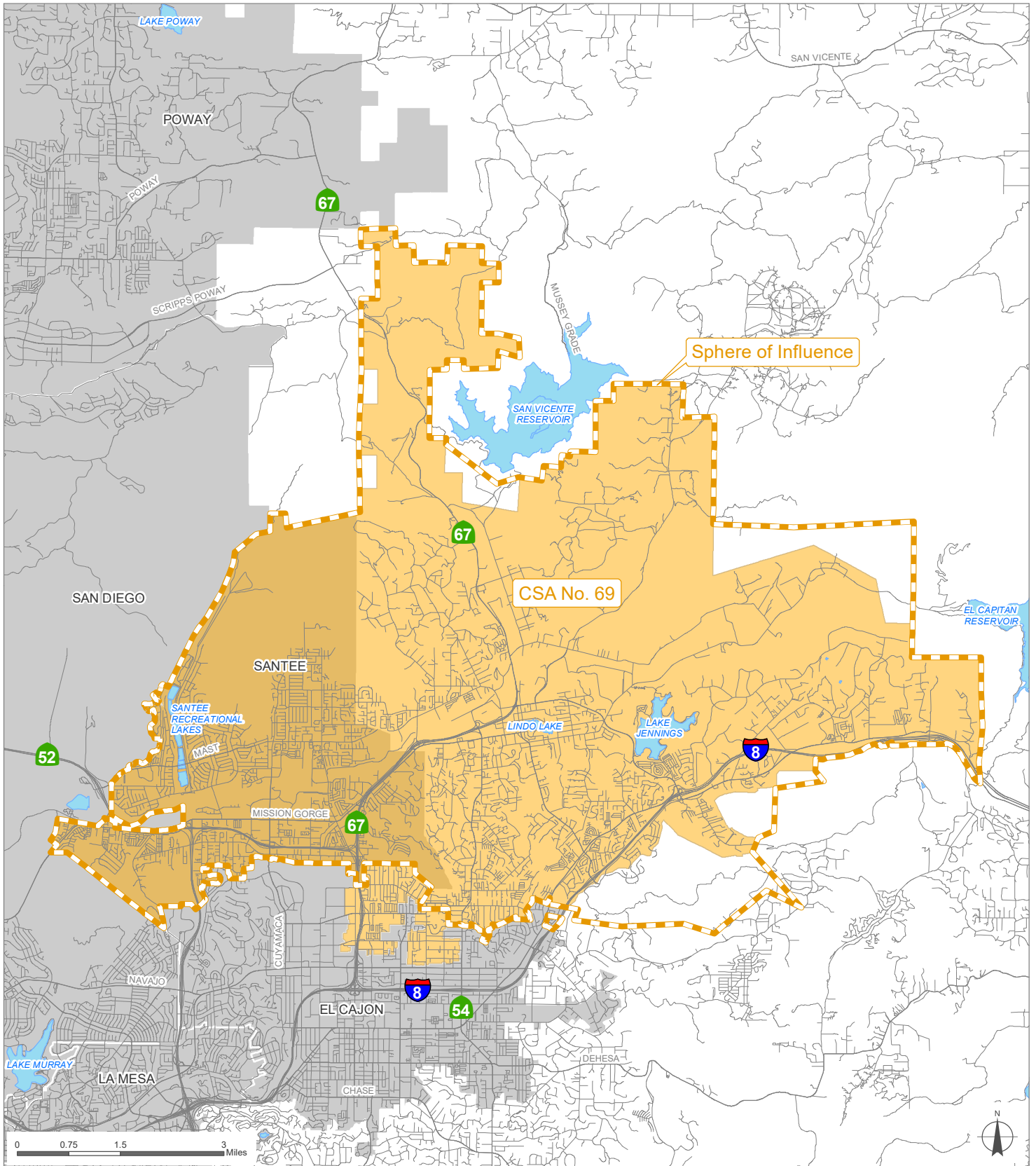


CSA No. 69 (Heartland Paramedics)



San Diego County
Local Agency Formation Commission
 Regional Service Planning | Subdivision of the State of California

This map is provided without warranty of any kind, either express or implied, including but not limited to the implied warranties of merchantability and fitness for a particular purpose. Copyright LAFCO and SanGIS. All Rights Reserved. This product may contain information from the SANDAG Regional Information System which cannot be reproduced without the written permission of SANDAG. This map has been prepared for descriptive purposes only and is considered accurate according to SanGIS and LAFCO data.

Created by Dieu Ngu -- 6/18/2021

G:\GIS\PROJECTS\Profile_maps\2021 maps\Districts\CSA 69.mxd

SOI Adopted: 5 / 7 / 1990
 SOI Affirmed: 8 / 6 / 2007

SOI = Sphere of Influence

