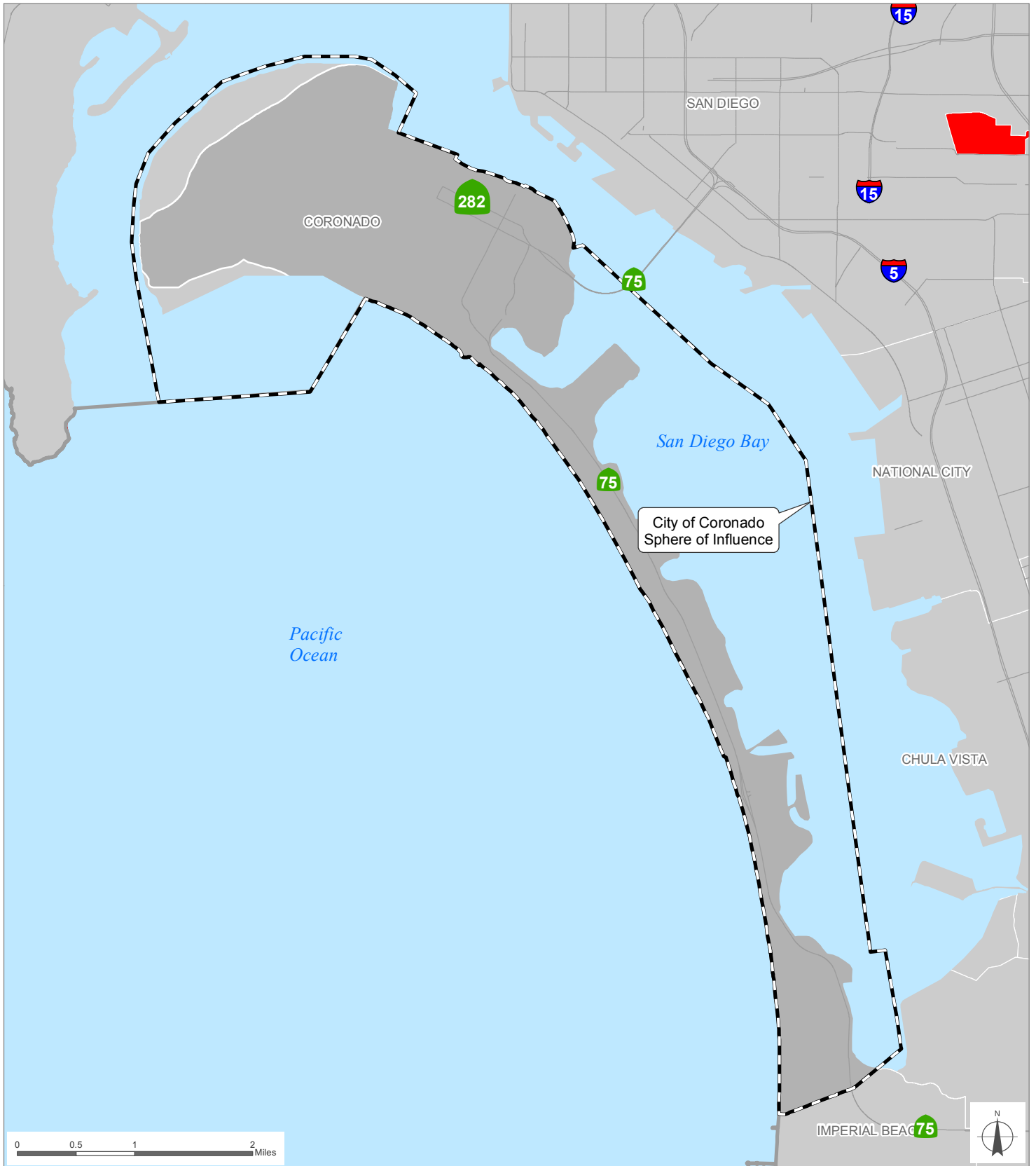


2016 Disadvantaged Unincorporated Communities (DUC): City of Coronado



SAN DIEGO LAFCO **SanGIS**
We Have San Diego Covered!

THIS MAP/DATA IS PROVIDED WITHOUT WARRANTY OF ANY KIND, EITHER EXPRESS OR IMPLIED, INCLUDING BUT NOT LIMITED TO, THE IMPLIED WARRANTIES OF MERCHANTABILITY AND FITNESS FOR A PARTICULAR PURPOSE.

Copyright SanGIS 2009 - All Rights Reserved. Full text of this legal notice can be found at: http://www.sangis.org/Legal_Notice.htm
 Created by Dieu Ngu -- 1/5/2018

2016 DUC Annual Median Household Income

■ Qualifying Census Tracts (\$54,191 or less)

The 2016 1-year Statewide Annual Median Household Income (AMHI) is \$67,739. A Qualifying DUC has an AMHI that is 80% or less than the Statewide AMHI. Shown on this map are Census Tracts with a median household income of \$54,191 or less. Source: 2016 American Community Survey, U.S. Census Bureau.

